

Leadership - Magic the Gathering style

Personality types:



In charge: team player, loyal, respectful



Organized: detail oriented, perfectionist, thinker



Ambitious: dedicated, gets things done



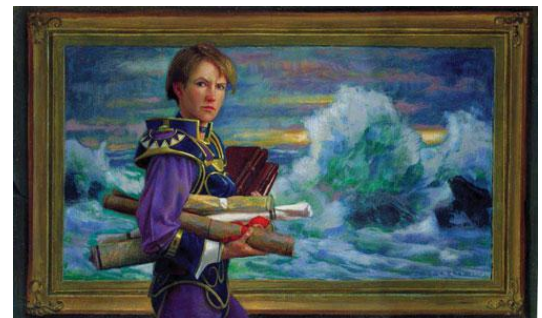
Passionate: passionate, excited, task driven



Resourceful: aware of resources, supportive

So what does this mean?

- People have different skills that you have to be aware of.
- People with different leadership styles approach problems differently.
- People with different leadership styles also put different emphasis on the program they want to do.



How does this pertain to me ?

- You have to be aware of different people's approaches to tasks.
- You need a diverse team to get a problem solved effectively.
- You need to be aware your own strengths and weaknesses and those of others.
- When doing programs, make them diverse and don't do programs for the same group of people all the time.